

# SCFA Ladder Company Operations

---

---

---

---

---

---

---

---

1

## Ladder Company Operations 2016

- Welcome
- Two night course
- Private dwellings (tonight)**
- Taxpayers (next session)



---

---

---

---

---

---

---

---

2

## Traditional Truck Co Positions & Tools

- |                             |                     |
|-----------------------------|---------------------|
| <b>Inside Team</b>          | <b>Outside team</b> |
| •Officer                    | •Chauffeur          |
| •Forcible Entry Firefighter | • Outside Vent      |
| •Can Firefighter            | •Roof               |

What tools do they carry in your department?

---

---

---

---

---

---

---

---

3

Apparatus

Aerial Platform  
(most common in Suffolk)



Rear mount (stick) →



Tower Ladder ↑



4

---

---

---

---

---

---

---

---



Private Dwellings

5

---

---

---

---

---

---

---

---

Type V = Wood Frame

Balloon



Platform



6

---

---

---

---

---

---

---

---

Construction

Conventional ??



Light weight



7

---

---

---

---

---

---

---

---

Types of Private Dwellings

Ranch



Cape Cod



8

---

---

---

---

---

---

---

---

McMansion



Center Hall Colonial



9

---

---

---

---

---

---

---

---

Bungalow's



10

---

---

---

---

---

---

---

---

East end and North Shore



11

---

---

---

---

---

---

---

---

Attached PD



- Extension
- Common cockloft?
- Flat or peaked roof
- Fire stopping ?
- Sprinklered?

12

---

---

---

---

---

---

---

---

*Life Hazard*

- Known
- Suspected
- Everyone's out!




---

---

---

---

---

---

---

---

13

Occupancy

PD



Multiple Dwelling or PD




---

---

---

---

---

---

---

---

14

SRO – Single Room Occupancy



- Individual rent rooms
- Common kitchen area
- Overcrowded conditions
- Off campus housing
- Limited means of egress

---

---

---

---

---

---

---

---

15

Group Home



- Built as a PD
- Very common certain neighborhoods
- Rehab, physically and mentally challenged
- Staffed 24 hrs ?
- Know you response area

---

---

---

---

---

---

---

---

16

Unoccupied



- *Owners have moved out*
- *Still being maintained?*
- *Holes in floors due to the MONGO Guys !!!!*

---

---

---

---

---

---

---

---

17

Vacant or Zombies

- **What is the life hazard?**
- **Boarded up**
- **No maintenance of the property**




---

---

---

---

---

---

---

---

18

*Extent of Fire*

- How much fire on arrival?
- How long has it been burning?
- Viable Life Hazard?
- What type of Construction?




---

---

---

---

---

---

---

---

19

*Location*



- Cellar ?
- What floor ?
- What room ?
- Attic ?
- Garage ?

---

---

---

---

---

---

---

---

20

*Exposures*



- Where is the life hazard?
- 1<sup>st</sup> due vs 2<sup>nd</sup> Due
- Who searches the fire building and who is responsible for the exposure?
- What if you had more than one exposure issue?

---

---

---

---

---

---

---

---

21

Auto Exposure



- Within the structure
- Vent from first floor to second
- Be careful when operating on porches

22

---

---

---

---

---

---

---

---

Area



Stay together? How many Firefighters are required?

Search line required?

23

---

---

---

---

---

---

---

---

Height



Know your response area!!

Common in Suffolk to have two stories in the front and three in the rear.

24

---

---

---

---

---

---

---

---



*Street Conditions*



- **Topography**
- **Wires**
- **Narrow streets**
- **Parked cars**

25

---

---

---

---

---

---

---

---

**Ladder Co = LOVERS U**

- Ladder
- Overhaul
- Vent
- Entry
- Rescue
- Search
- Utilities



26

---

---

---

---

---

---

---

---

**Forcible Entry**

- **TRY BEFORE YOU PRY!**
- Control the door
- Break panel of glass and unlock
- **Don't create a flow path**
- Big \$\$\$ homes may pose a significant challenge



27

---

---

---

---

---

---

---

---

Vent



28

---

---

---

---

---

---

---

---

Vent

Horizontal



Vertical



29

---

---

---

---

---

---

---

---

Windows - Vent

Hurricane windows



Double Hung



30

---

---

---

---

---

---

---

---

HUD Windows



31

---

---

---

---

---

---

---

---

Vent of HUD Windows



32

---

---

---

---

---

---

---

---

Vent



33

---

---

---

---

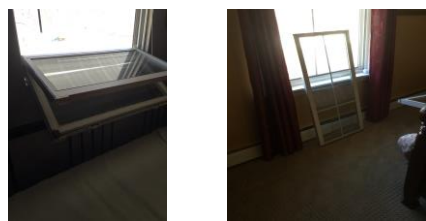
---

---

---

---

Minor fire – vent option



---

---

---

---

---

---

---

---

34

Flat roof PD

- Don't fall off the roof
- Rare in Suffolk
- Use skylights and scuttles
- When would you cut?
- Where?
- Check cockloft early for extension



---

---

---

---

---

---

---

---

35

360

- Ensure a 360 is conducted prior to entry
- Check the cellar
- Note location of fire
- Visible victims?
- Smoke
- Stability of structure



---

---

---

---

---

---

---

---

36

Searches

- Primary
- Fire Floor
- Floor Above
- Secondary




---

---

---

---

---

---

---

---

37

Primary Search



- Fire Floor**
- Push to the seat of the fire
  - Close the door
  - Call for the line
  - Start your search

---

---

---

---

---

---

---

---

38

Primary searches

Floor above



- Most dangerous location with in the building
- Don't over commit & maintain situational awareness
- Start search at top of stairs
- Get to the most exposed area first if there is not a known life hazard

---

---

---

---

---

---

---

---

39

H2O



- Maintain situational awareness
- Listen to the radio
- Are there water problems?
- Is the Engine company making progress on the fire

---

---

---

---

---

---

---

---

40

Searches - Bedrooms



---

---

---

---

---

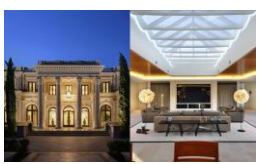
---

---

---

41

Large areas



---

---

---

---

---

---

---

---

42

VEIS



- Vent
- Enter
- Isolate
- Search
- Portable vs platform

---

---

---

---

---

---

---

---

43

Rescue



- Preferential order of removal
- Interior stairs first
- Call for help if needed
- Location of EMS
- Multiple victims

---

---

---

---

---

---

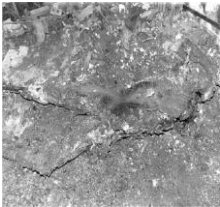
---

---

44

*Secondary Searches*

- Down to the floor
- Fire and victims
- No rush approach
- Listen to civilians
- Overhaul as required




---

---

---

---

---

---

---

---

45

Ladder placement

- General guide is:
- Adjacent to and above the fire
- Tip placement:
- Window ?
- Roof ?




---

---

---

---

---

---

---

---

46




---

---

---

---

---

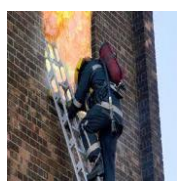
---

---

---

47

Pop Quiz



•What's wrong in this picture?

---

---

---

---

---

---

---

---

48



Victims on Portable Ladders



- *Very difficult operation*
- *Conscious vs unconscious*
- *Adult vs small child*
- *How many firefighters?*

49

---

---

---

---

---

---

---

---

Victim removal via Portables

- **Use a solid surface to your advantage**
- **Garage roof, Porch, etc**
- **Be aware that fire can quickly engulf that platform**



50

---

---

---

---

---

---

---

---

Portable ladder Rescue



51

---

---

---

---

---

---

---

---

Overhaul

- Don't over rely on TIC
- Pull to a clean bay
- Sheetrock will hinge and fall in large sections




---

---

---

---

---

---

---

---

52

Safety and situational awareness




---

---

---

---

---

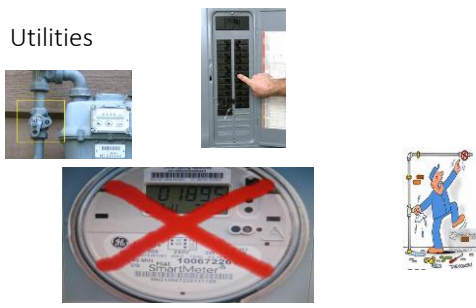
---

---

---

53

Utilities




---

---

---

---

---

---

---

---

54

Solar

- Cut the circuit breaker
- Cut the A/C
- Shut off the invertor
- Cut the D/C




---

---

---

---

---

---

---

---

55

Apparatus Positioning

- Known life hazard
- Front of the building
- Portable vs Apparatus
- Two sides of the building
- Roof ops




---

---

---

---

---

---

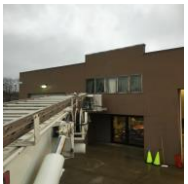
---

---

56

Aerial or bucket placement

Below the sill



At the sill




---

---

---

---

---

---

---

---

57

Routine Emergencies & fires

Mattress Fire



Food on the stove



58

---

---

---

---

---

---

---

---

Self cleaning oven

- Check for extension
- Cut electric or gas if necessary
- **Don't break the door**



59

---

---

---

---

---

---

---

---

Safety issues

Built in pools



Small windows



60

---

---

---

---

---

---

---

---

Safety

Hoarders or Collyer's Mansion



- Delayed entry
- Delayed searches
- Victims might be hidden
- Fire load
- Easy to get disorientated

61

---

---

---

---

---

---

---

---

Safety



- Structural stability issues**
- Risk vs Reward
  - DC Dunn - "a building under fire is a building under demolition"
  - Is there a life hazard?
  - Notify building department

62

---

---

---

---

---

---

---

---

PD Collapse



63

---

---

---

---

---

---

---

---

Any questions, doubts or comments?



64

---

---

---

---

---

---

---